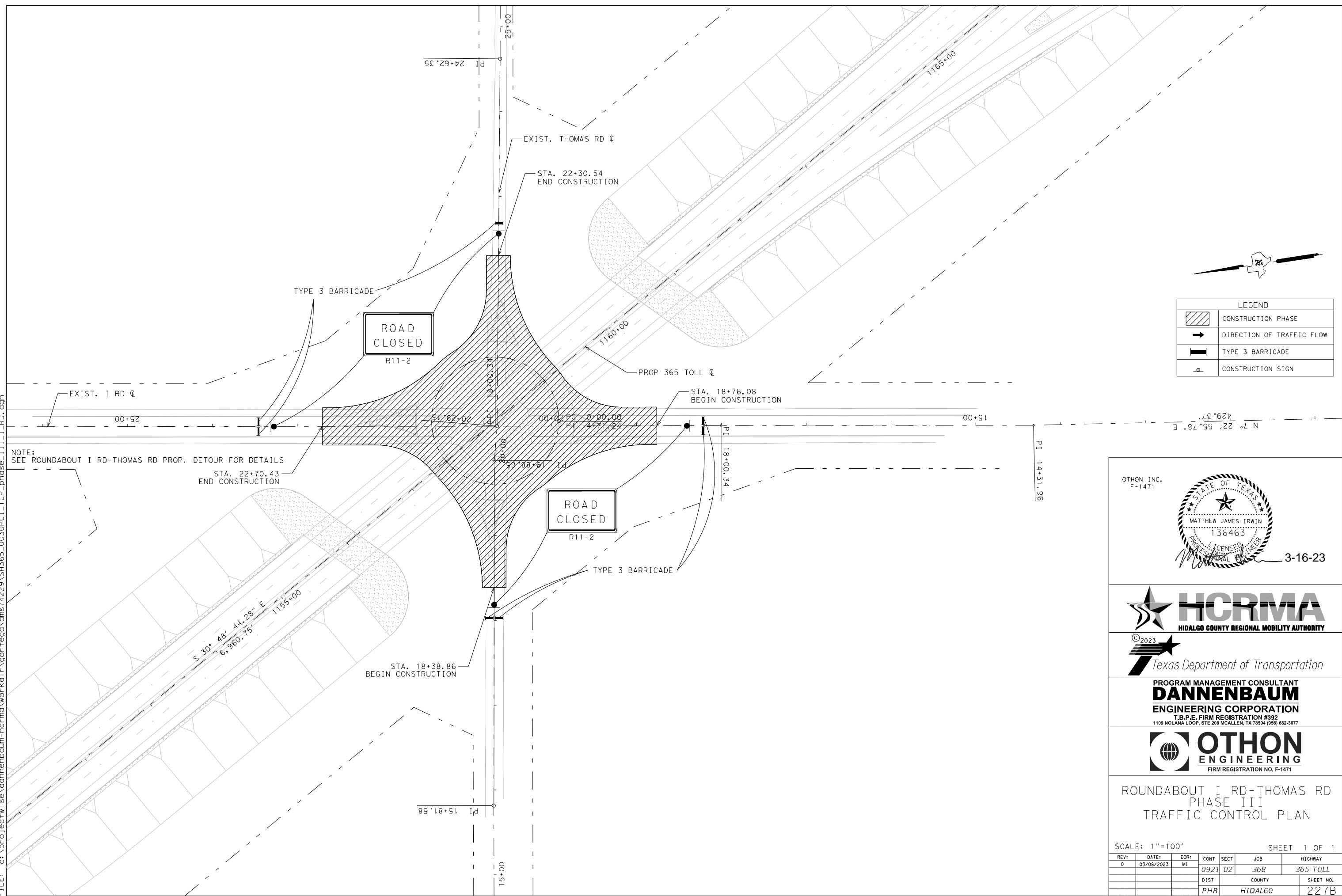


DATE RECEIVED: 06/21/2023
 DATE ACCEPTED: 12/12/2023
 BY: Samuel Saldivar, Jr.

EFFECTIVE PLAN SHEET - RELEASED FOR CONSTRUCTION
 THE HCRMA HAS ACCEPTED THIS AS THE GOVERNING CONTRACT DOCUMENT UPON VERIFICATION FROM POLICE CONSTRUCTION, INC. THAT EITHER: NO CHANGE WAS MADE, MINOR REVISION WAS MADE, OR A COMPLETE REPLACEMENT OF THE SHEET WAS MADE TO CONFORM TO THE EFFECTIVE CONTRACT FOR THE 365 TOLLWAY SEGMENTS 1 AND 2 (CSJ: 0921-02-368).

DATE: 15/03/2023 13:24:01
 FILE: c:\projectwise\dannenbaum-hcrma\workdir\gor\tega\dms74229\SH365_0030PC1_TCP_phase_III_I_RD.dgn



LEGEND

	CONSTRUCTION PHASE
	DIRECTION OF TRAFFIC FLOW
	TYPE 3 BARRICADE
	CONSTRUCTION SIGN

OTHON INC.
F-1471

PROGRAM MANAGEMENT CONSULTANT
DANNENBAUM
 ENGINEERING CORPORATION
 T.B.P.E. FIRM REGISTRATION #392
 1109 NOLANA LOOP, STE 208 MCALLEN, TX 78504 (956) 682-3677

ROUNDABOUT I RD-THOMAS RD
 PHASE III
 TRAFFIC CONTROL PLAN

SCALE: 1"=100' SHEET 1 OF 1

REV:	DATE:	EOR:	CONT:	SECT:	JOB:	HIGHWAY:
0	03/08/2023	MI	0921	02	368	365 TOLL
			DIST:	COUNTY:	SHEET NO.:	
			PHR	HIDALGO	227B	